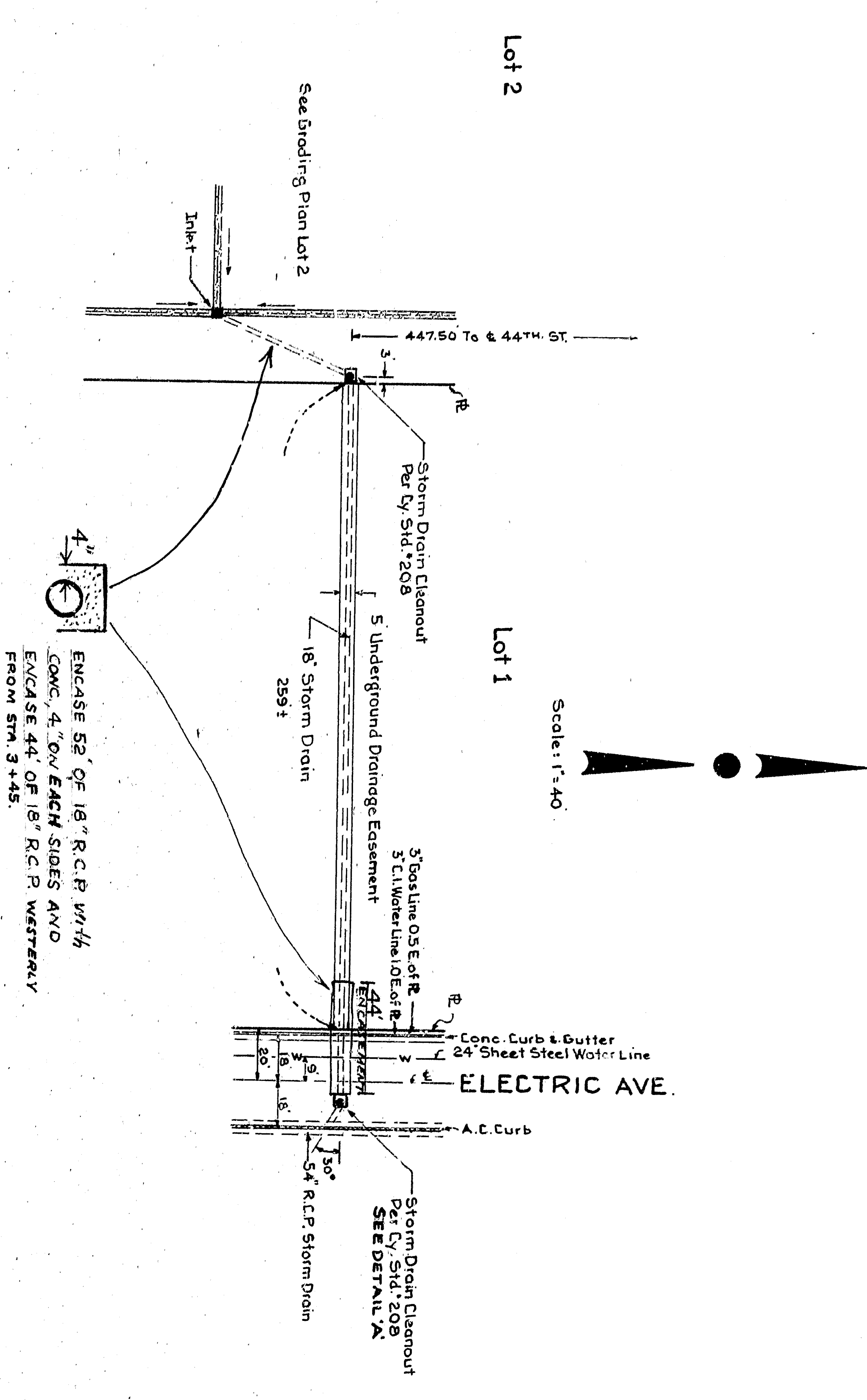


Profile Scale
Hor: 1"=40'
Vert: 1"=4'

DESIGN DATA

DRAIN PIPE
A1=6" x 3.7' ACRES
L1=700'
T=3.71m
Q=1.48 CFS
Q=6.67 CFS
18" Conc. Pipe Proposed, n=0.015,
Minimum S=0.0054

INLET
Q=1.48 CFS
Q=6.67 CFS
Minimum S=0.0054



ENCASE 52' OF 18" R.C.P. WITH
CONC. 4" ON EACH SIDE AND
EXCAVE 44' OF 18" R.C.P. WESTWARD
FROM STM 3+45.

PROPOSED DRAINAGE PLAN
LOT 2, ARROWHEAD SUBURBAN FARMS

May 1946
RALPH STONE REGISTERED CIVIL ENGINEER

DEPARTMENT OF ENGINEERING
CITY OF SAN BERNARDINO

Proposed Drainage Plan
Lot 2, Arrowhead Suburban Farms

| | | |
|---------------------------|--------------|------------------|
| SUBMITTED BY: R. STONE | DATE: 5-1-46 | DRAWN: C. KO |
| APPROVED: RALPH STONE | DATE: 5-1-46 | CHECKED BY: 34 5 |
| CITY ENGINEER | DATE: 5-1-46 | SCALE: 1"=40' |
| REGISTERED CIVIL ENGINEER | DATE: 5-1-46 | DATE: 5-1-46 |

DRAINAGE PLAN